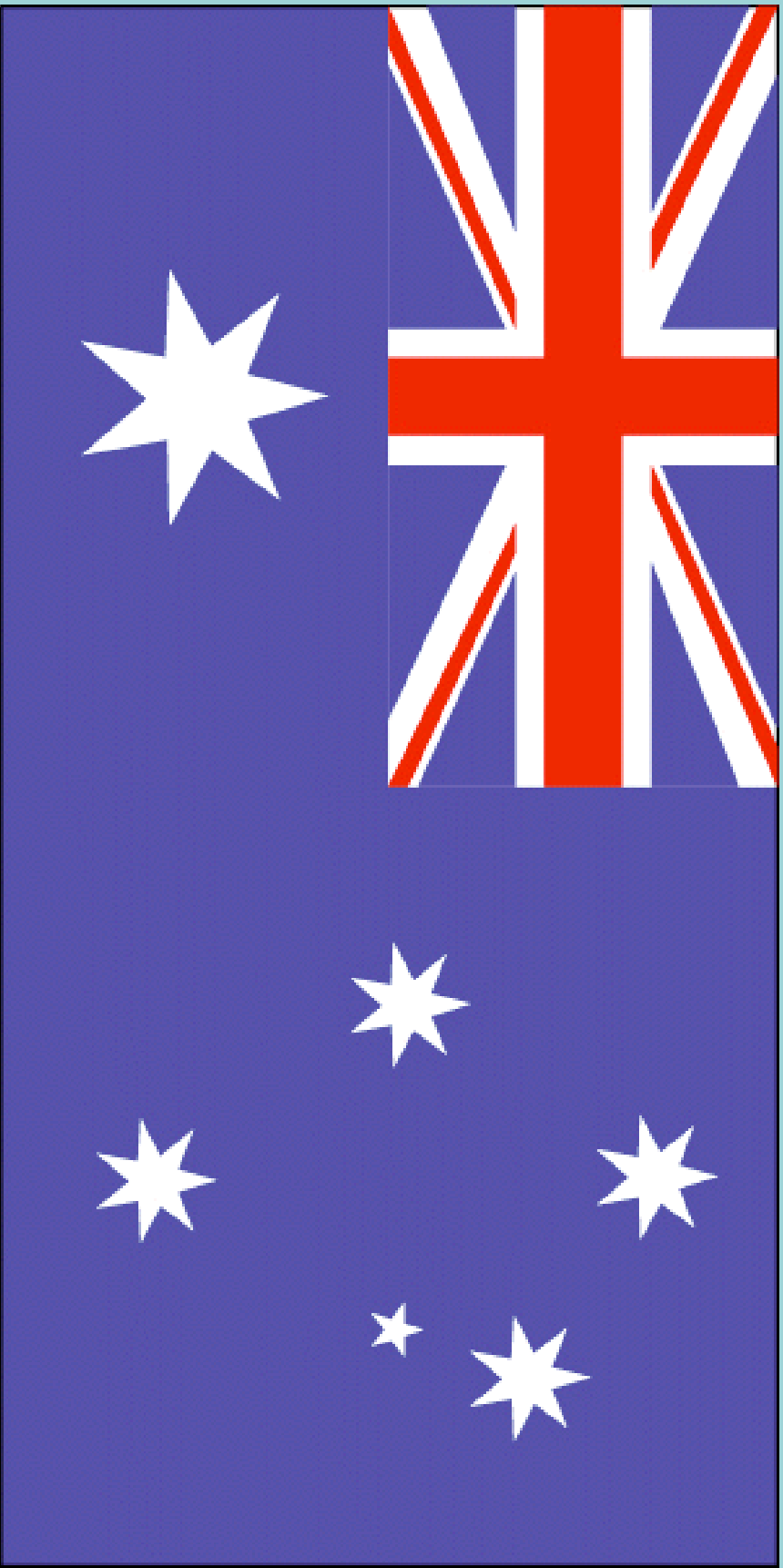


Australia and New Zealand: Powerpoint



Physical Geography

- Australia and New Zealand are between the Indian and Pacific Oceans.



- The continent of Australia is moving 2 inches per year towards Asia due to plate tectonics.
- New Zealand is made up of 2 major islands and was formed by volcanoes.

- Australia's seasons are opposite of the United States due to their location. (Southern Hemisphere)
- Because of its isolation, Australia and New Zealand's plant and animal life are found nowhere else on earth.
- More than 80 percent of our plants, mammals, reptiles and frogs are unique to Australia and are found no-where else. Some of our best-known animals are the kangaroo, **koala**, echidna, dingo, **platypus**, wallaby and **wombat**.

Animals



Koala Bear



Echidna



Kangaroo



Wombat



Wallaby

Dingo



Physical Geography

- New Zealand has a cooler climate than Australia because it is farther from the equator.
- Most Australians live on the east and southeast coast because of the mild climate and good rainfall.
- Australia and New Zealand's people mostly live along the coast in cities.
- Australia and New Zealand grow similar crops, produce iron ore, coal, and natural gas, and raise sheep.

Landforms

Australia

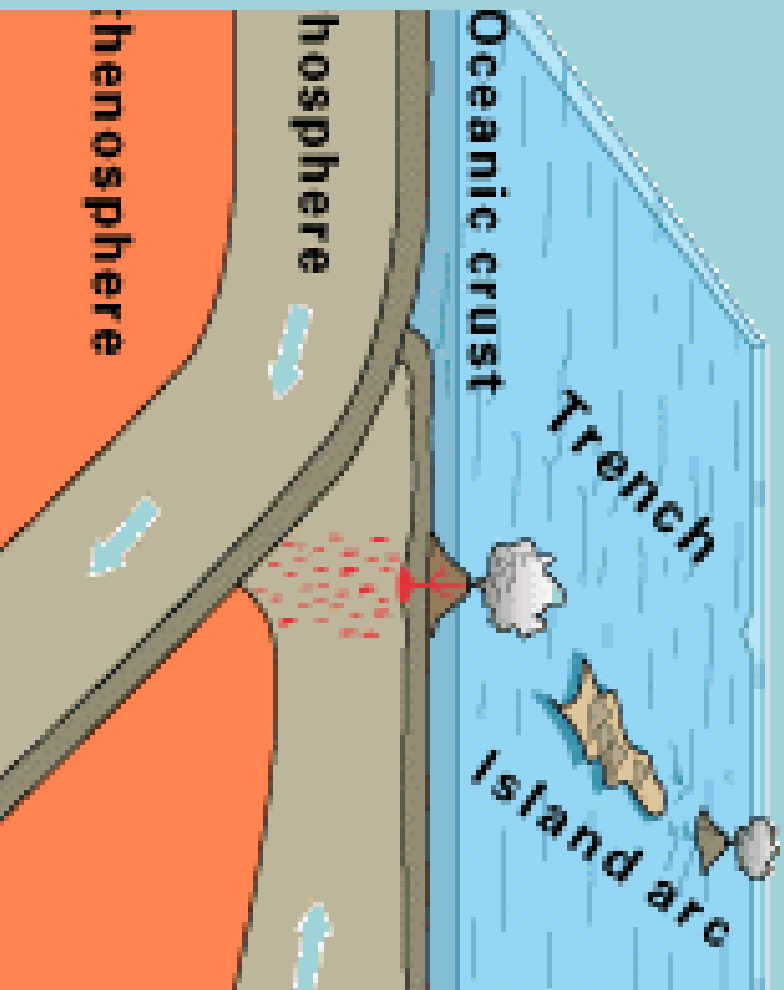
- Outback
- Great Dividing Range
- Great Barrier Reef
- Australian Alps

New Zealand

- Glaciers
- Fjords
- Geysers
- Volcanoes
- High Mountains
- Large Forests

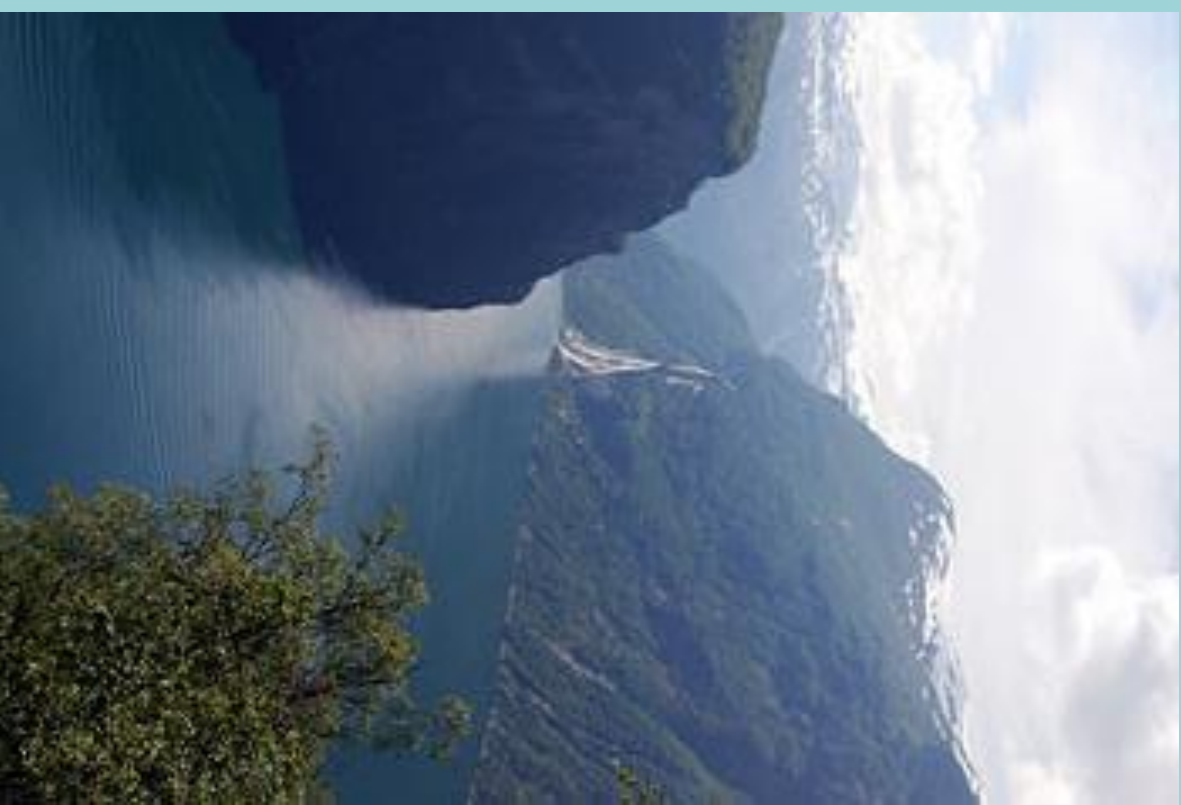
New Zealand: Created by Volcanoes

- As Australia drifted away, the Australian plate collided with the Pacific plate.



Fjord

- Define Fjord:
- A long, narrow, deep inlet from the sea between steep slopes of a mountainous coast. **Fjords** usually occur where ocean water flows into valleys formed near the coast by glaciers.



Geyser



- Define “geyser”:
- a hot spring in which water intermittently boils, sending a tall column of water and steam into the air

Pacific Islands

- The Pacific Islands are archipelagos, which are chains of islands.
- High islands are formed from volcanoes and are mountainous.
- Low islands are made up of coral reefs or atolls.
- An atoll is a small coral island in the shape of a ring.
- Coral is a rock like material made up of the skeletons of tiny sea creatures.
- Fewer people live on low islands than high islands.
- The Pacific is located in the tropics and hot year-round.
- Most islands receive rain year round and can have typhoons.
- Most islanders depend on cash crops and tourism to earn a living.

Facts about Australia



Canberra is the capital of Australia



The Outback is the vast, remote, arid interior of Australia. The term "the Outback" is generally used to refer to locations that are comparatively more remote than those areas named "the bush."



The outback



The bush

Great Barrier Reef

The Great Barrier Reef is the world's largest coral reef system composed of over 2,900 individual reefs and 900 islands stretching for over 1,400 The reef is located in the Coral Sea, off the coast of Queensland, Australia.

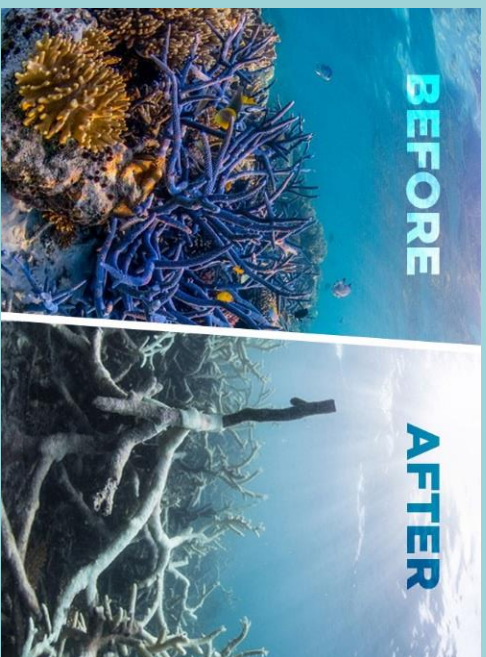
The Great Barrier Reef can be seen from outer space and is the world's biggest single structure made by living organisms. This reef structure is composed of and built by billions of tiny organisms. It supports a wide diversity of life and was selected as a World Heritage Site in 1981.

A large part of the reef is protected by the Great Barrier Reef Marine Park, which helps to limit the impact of human use, such as fishing and tourism. Other environmental pressures on the reef and and its ecosystem include runoff, climate change accompanied by mass, coral bleaching, and cyclic population outbreaks of the Crown-of-Thorns starfish. According to a study published in October 2012 by the *Proceeding of Natural Sciences*, the reef has lost more than half its coral cover since 1985.

Video on coral bleaching

<https://app.discoveryeducation.com/learn/videos/377e3f62-fa77-462a-83b2-39a8601a34c5?hasLocalHost=false>

Great Barrier Reef



Australian sayings

Ace! : Excellent! Very good!

Arvo : afternoon

Beaut, beauty : great, fantastic

Big Mobs : loads, a lot of

Blue : argument/mistake

Body : poor quality

Bottler : something excellent

Buckley's chance : no chance
(you've got)

Cactus : dead, broken

Cark it : to die, stop working

Come a gutser : a bad mistake or have an accident

Cut snake : very angry
(mad as a)

Dinkum / fair dinkum : true, real, genuine

Dinky-di : the real thing, genuine

Furphy : rumour

G'Day : hello!

Give it a burl : try it, have a go

Good oil : useful information, a good idea, the truth

Good onya : well done

Grouse : great, terrific

It's gone walkabout : it's lost, can't be found

No worries! : no problem / it's okay

Ridgy-didge : original, genuine

Right : okay

Ripper : Great

Rooted : ruined, broken

She'll be apples : It'll be all right

Stuffed, I'll be : expression of surprise

Facts about New Zealand

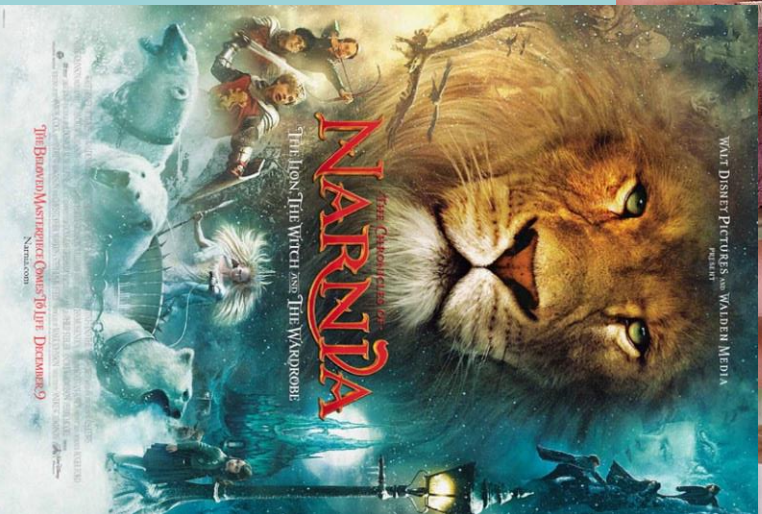


New Zealand



Due to New Zealand's lush and diverse landscape may films and T.V. shows have been filmed here. It is actually made up of 12 islands. The Tasman Sea separates Australia and New Zealand.

Xena: Warrior Princess



Lord of the Rings and Hobbit movies



Famous people and things from New Zealand



Rugby is the official sport



Lucy Lawless



Russel
Crowe



Kiwi bird-
originally
from China



<https://www.youtube.com/watch?v=18nrhE>

[PuXtc](#)



Auckland is the capital of New Zealand.
The official language of New Zealand is
English.